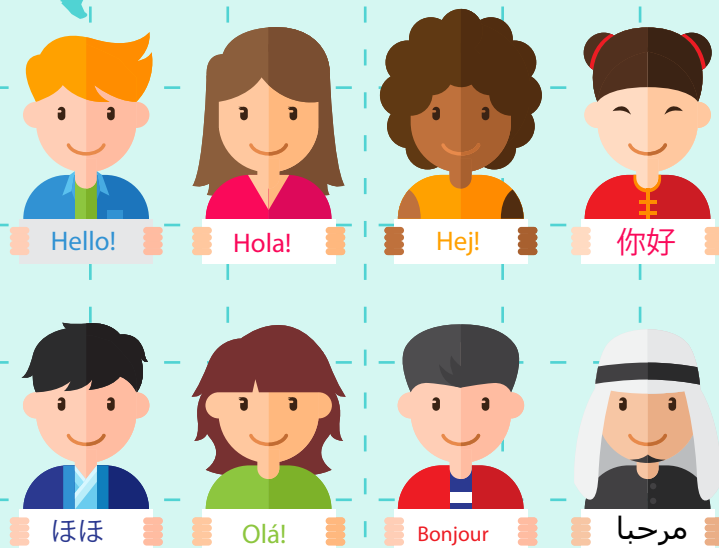


GUIDE FOR WELCOMING MIGRANT PUPILS





TECHNICAL DATA

GUIDE FOR WELCOMING MIGRANT PUPILS

City Council of Odivelas
Educational Projects, Equality and Citizenship Division
Editing and Design
City Council of Odivelas
Communication, Public Relations and Protocol Office
Print
City Council of Odivelas
Communication, Public Relations and Protocol Office
Place
CMO - Odivelas
Date
2023



The Municipality of Odivelas is rich for its diversity. In this context, the City Council has been trying to respond to the needs resulting from this cultural and social reality, following, year after year, a path that aims to promote inclusion, tolerance and equal opportunities in the most diverse domains, but also to value plurality and respect for different origins, religions, cultures and customs.

To achieve these different purposes, the Municipal Plan for the Integration of Odivelas' Migrants was designed, an important instrument of convergence and institutional coordination with social partners and entities that act at the municipal level in the migration scope, with the objective of creating local measures and strategies based on the real diagnosis of the needs of our immigrant community.



The Reception Guide to support the School Integration of Migrant Pupils results, therefore, from this important Plan, aimed at this population, newly arrived or residing in the Municipality, providing didactic content favourable to the process of integration of children and young people in the environment where they attend school.

The construction of a more supportive, more cohesive territory, which promotes the welcoming and effective integration of all citizens, regardless of their country of origin, belief or condition, is and will always be on the daily agenda of this Municipality.

Aware of this responsibility, it is essential for everyone to contribute in order to continue to follow a path of sustained development, progress and modernity, based on the defence of Human Rights and which favours the reinforcement of good practices that guarantee the dignity of the Person and their well-being in the community.

Hugo Martins
Mayor







TABLE OF CONTENTS

MESSAGE FROM THE MAYOR	• 3
PORTUGAL	• 6
ODIVELAS	• 7
THE PORTUGUESE EDUCATIONAL SYSTEM	• 8
QUALIFICATIONS EQUIVALENCE SYSTEM	• 9
SCHOOL CALENDAR	• 9
WHAT DO YOU LEARN IN PORTUGUESE SCHOOLS?	• 11
ADDITIONAL INFORMATION ON SOME SUBJECTS/AREAS	• 14
PUPILS ASSESSMENT SYSTEM	• 15
ABSENCES SCHEME	• 16
WHO CAN JUSTIFY NOTICES/ABSENCES?	• 17
BUT WHAT IS A GUARDIAN?	• 17
WHAT IS A CLASS DIRECTOR / HEAD TEACHER?	• 18
MEETING WITH THE GUARDIAN	• 18
PUPIL'S REGISTRATION BOOK	• 19
PUPIL'S CARD	• 19
SCHOOL MEALS	• 20
SCHOOL SOCIAL SUPPORT (ASE)	• 20
WHAT OPTIONS ARE THERE FOR MONITORING CHILDREN/YOUNG PEOPLE BEYOND SCHOOL HOURS?	• 21
WHAT OPTIONS ARE THERE, IN THE MUNICIPALITY'S PUBLIC SCHOOLS, FOR THE MONITORING AND INCLUSION OF CHILDREN/YOUNG PEOPLE WITH DISABILITIES?	• 27
ADAPTED TRANSPORTATION	• 28
SCHOOL OR WEEKLY SCHEDULE	• 28
STUDENT STATUTE (LAW NO. 51/2012)	• 29
USEFUL INFORMATION	• 32



PORTUGAL

PORTUGAL, officially the **Portuguese Republic**, is a country located in southwestern Europe, in a region called the Iberian Peninsula, and is the westernmost nation on the European continent.

The Portuguese territory has a total area of **92,090 km²**, being bordered to the north and east by Spain and to the south and west by the Atlantic Ocean, comprising the mainland and two autonomous regions (North Atlantic): the archipelagos of Azores and Madeira. Portugal has been an independent country since 1139 and a member of the European Union since 01 January 1986.



Political Regime: Representative Democracy

Official Language: Portuguese

Official Currency: Euro

Capital City: Lisbon

National Anthem: A Portuguesa (The Portuguese)

Estimated population: 10,295,909 (population density of 115.3 inhabitants / km²)



Flag of Portugal



ODIVELAS

ODIVELAS is a Portuguese municipality in the district of Lisbon, region and sub-region of the Lisbon Metropolitan Area, with an area of 26.54 km² and about 148,000 inhabitants, being one of the smallest municipalities in Portugal. It has been administratively divided into 4 parishes since 2013 - 1. Odivelas, 2. Pontinha and Famões, 3. Ramada and Caneças and 4. Olival Basto and Póvoa de Santo Adrião. The seat of the municipality is the City of Odivelas.

Number of pupils: 18,276 in the school year 2021/2022

(source: Municipal Education Observatory of the Municipality of Odivelas)

Percentage of Foreign Population: 17.7% (2019 estimate - Pordata)

Population: 148,000 inhabitants (approx.) / Population Density of 5,576 inhabitants /km²



Odivelas Coat of Arms



THE PORTUGUESE EDUCATION SYSTEM

In Portugal, the schooling of children and young people is organised according to their age, **free of charge** and **compulsory from the age of 6 up to the age of 18**.

	Levels of Education	Schooling levels	Age
Optional	Pre-school Education		3
			4
			5
COMPULSORY EDUCATION	Primary School	Year 1	6
		Year 2	7
		Year 3	8
		Year 4	9
	Lower Middle School	Year 5	10
		Year 6	11
	Upper Middle School	Year 7	12
		Year 8	13
		Year 9	14
	Secondary School	Year 10	15
		Year 11	16
		Year 12	17
OPTIONAL	Higher Education		From 18 years old

Although compulsory schooling starts at the age of 6 (Primary School), the Portuguese Education System provides **universal and free pre-school education from the age of 4** (source: Law no. 85/2009, of 27 August 2009, with the current wording).

To enroll the child/young person in school, the person responsible for their education (Guardian), normally the father or mother, should go to the **Head School of the School Grouping / Non-Grouped School** in their area of residence and fill in the necessary forms, or do it through the **Enrollment Portal** (www.portaldasmatriculas.edu.gov.pt).

Children and young people may also attend compulsory education in Private Charitable Institutions (IPSS) or Private Entities, upon payment of a registration fee and monthly fees (not free of charge). In the case of IPSS, the fees will be calculated based on the Family's income (IRS).



QUALIFICATIONS EQUIVALENCE SYSTEM

At any time of the year, you may deliver, at the Head School of the Schools Grouping / Non-Grouped School in your area of residence, the documents proving your qualifications, duly translated, when they are written in a foreign language" (source: Decree-Law no. 227/2005, of 28/12, with the current wording and FAQs of the DGE), and this must be authenticated by the consulate/embassy services. The assessment of this certificate will allow the school to place the pupil in the school year which best corresponds to their academic competences and maturity level.

SCHOOL CALENDAR

The school calendar is set each year by the Ministry of Education and Science and published in the Official Gazette. In Odivelas, the school year is divided into two semesters, usually starting in mid-September and ending in June of the following calendar year.

		Sá.	Do.	2ª	3ª	4ª	5ª	6ª	Sá.	Do.	2ª	3ª	4ª	5ª	6ª	Sá.	Do.	2ª	3ª	4ª	5ª	6ª	Sá.	Do.	2ª	3ª	4ª	5ª	6ª	Sá.	Do.						
2023	setembro						1	2	3	4	5	6	7	8	9	10	11	12	13	14	15	16	17	18	19	20	21	22	23	24	25	26	27	28	29	30	
	outubro	1	2	3	4	5	6	7	8	9	10	11	12	13	14	15	16	17	18	19	20	21	22	23	24	25	26	27	28	29	30	31					
	novembro				1	2	3	4	5	6	7	8	9	10	11	12	13	14	15	16	17	18	19	20	21	22	23	24	25	26	27	28	29	30			
	dezembro						1	2	3	4	5	6	7	8	9	10	11	12	13	14	15	16	17	18	19	20	21	22	23	24	25	26	27	28	29	30	31
	janeiro		1	2	3	4	5	6	7	8	9	10	11	12	13	14	15	16	17	18	19	20	21	22	23	24	25	26	27	28	29	30	31				
2024	fevereiro					1	2	3	4	5	6	7	8	9	10	11	12	13	14	15	16	17	18	19	20	21	22	23	24	25	26	27	28	29			
	março						1	2	3	4	5	6	7	8	9	10	11	12	13	14	15	16	17	18	19	20	21	22	23	24	25	26	27	28	29	30	31
	abril			1	2	3	4	5	6	7	8	9	10	11	12	13	14	15	16	17	18	19	20	21	22	23	24	25	26	27	28	29	30				
	maio					1	2	3	4	5	6	7	8	9	10	11	12	13	14	15	16	17	18	19	20	21	22	23	24	25	26	27	28	29	30	31	
	junho	1	2	3	4	5	6	7	8	9	10	11	12	13	14	15	16	17	18	19	20	21	22	23	24	25	26	27	28	29	30						

1º semestre
2º semestre
Reuniões intercalares
Avaliação do 1º semestre
Interrupções letivas
Feriado

TERMO DAS ATIVIDADES LETIVAS:
4 de junho: 9.º, 11.º e 12.º anos
14 de junho: 5.º, 6.º, 7.º, 8.º e 10.º anos
28 de junho: pré-escolar e 1.º ciclo

REUNIÕES INTERCALARES 1º SEMESTRE:

• 16 e 17 de novembro

REUNIÕES AVALIAÇÃO 1º SEMESTRE:

• 22 a 24 de janeiro

REUNIÕES INTERCALARES 2º SEMESTRE:

• 26 e 27 de março

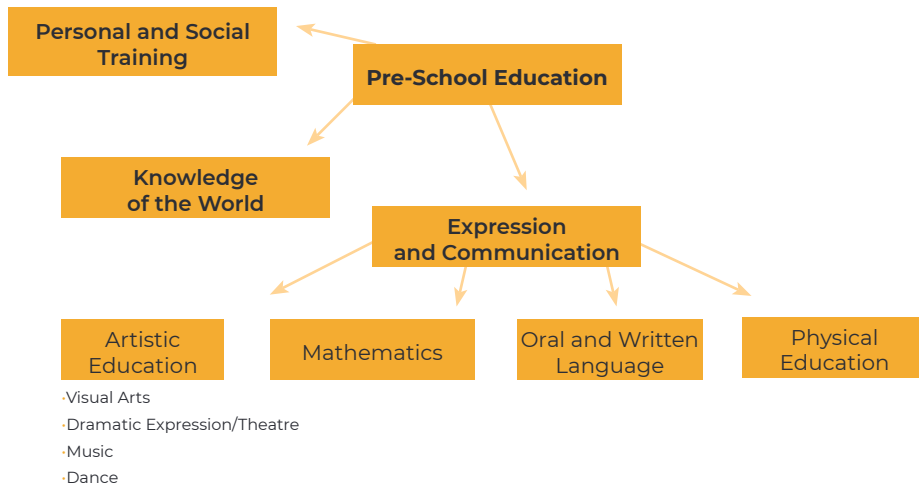
Nota: durante as reuniões de avaliação e intercalares não decorrerão atividades letivas.



At the end of this guide, you will find a detachable version of the 2022/2023 school calendar.

WHAT DO YOU LEARN IN PORTUGUESE SCHOOLS?

In Portugal the educational curriculum is divided into different areas and domains, depending on the level of education (pre-school, primary and secondary). Let's look at what is learned in each of them.



Primary, Lower Middle and Upper Middle School		
Primary School	Lower Middle School	Upper Middle School
Portuguese	Portuguese	Portuguese
Mathematics	English	English
Environmental Studies	History and Geography of Portugal	Foreign Language II
Artistic Education	Citizenship and Development	History
Physical Education	Mathematics	Geography
English	Natural Sciences	Citizenship and Development
Citizenship and Development	Visual Education	Mathematics
Information and Communication Technologies (ICT)	Technological Education	Natural Sciences
Moral and Religious Education	Musical Education	Physics and Chemistry
	ICT	Visual Education
	Physical Education	ICT
	Moral and Religious Education	Physical Education
		Moral and Religious Education



**Specialised Artistic Courses
(Dance and Music)**

Courses subject
to selection test

Lower Middle School	Upper Middle School
Portuguese	Portuguese
English	English
Citizenship and Development	Foreign Language II
History and Geography of Portugal	History
Mathematics	Geography
Natural Sciences	Mathematics
Visual Education	Natural Sciences
Physical Education	Physics and Chemistry
Moral and Religious Education (optional)	Visual Education
	Physical Education
	Moral and Religious Education (optional)

Education and Training Courses (CEF)			
CEF TYPE I A (1 year)	CEF TYPE I B (2 years)	CEF TYPE II A (2 years)	CEF TYPE I B (1 year)
Conditions of access			
Less than year 6 of schooling	Less than year 6 of schooling	Year 6 or 7 of schooling or attendance of Year 8	Year 8 of schooling or attendance of Year 9
Sociocultural Training (345 h)	Sociocultural Training (894 h)	Sociocultural Training (798 h)	Foreign Language Sociocultural Training (192 h)
Portuguese Language	Portuguese Language	Portuguese Language	Portuguese Language
Foreign Language	Foreign Language	Foreign Language	Citizenship and the Present World
Citizenship and the Present World	Citizenship and the Present World	Citizenship and the Present World	ICT
ICT	ICT	ICT	Hygiene, Health and Safety at work
Hygiene, Health and Safety at work	Hygiene, Health and Safety at work	Hygiene, Health and Safety at work	Physical Education
Physical Education	Physical Education	Physical Education	Scientific (66 h)
Scientific (90 h)	Scientific (288 h)	Scientific (333 h)	Applied Mathematics
Applied Mathematics	Applied Mathematics	Applied Mathematics	1 subject
1 subject	1 subject	1 subject	Technological (732 h)
Technological (480 h)	Technological (480 h)	Technological (768 h)	Short-Duration Training Unit of technological, technical and practical nature of the National Qualifications Catalogue
Short-Duration Training Unit of technological, technical and practical nature of the National Qualifications Catalogue	Short-Duration Training Unit of technological, technical and practical nature of the National Qualifications Catalogue	Short-Duration Training Unit of technological, technical and practical nature of the National Qualifications Catalogue	Practical (210 h)
Practical (210 h)	Practical (210 h)	Practical (210 h)	On-the-job training
On-the-job training	On-the-job training	On-the-job training	1200 h (minimum)
1125 h (minimum)	1972 h (minimum)	2109 h (minimum)	



Secondary School

Scientific and Humanistic Courses	Vocational Courses	Specialised artistic courses
Portuguese	Sociocultural Training (1000 H)	Portuguese
Foreign Language I, II or III	Portuguese	Foreign Language I, II or III
Philosophy	Foreign Language I, II or III	Philosophy
Physical Education	Area of Integration	Physical Education
Compulsory Triennial Subject (course area)	ICT	2 to 4 Subjects of the Scientific Area
2 Biennial Subjects - (course area)	Physical Education	2 to 5 Subjects of the Artistic Technical Area
Options: 2 Annual Subjects (1 course area and 1 from another area)	Scientific Training (500 H)	Moral and Religious Education (Optional)
Moral and Religious Education (optional)	2 to 3 Subjects of the Technical Area	
	Technological Training (1000 H to 1300 H)	
	3 to 4 Subjects of the technical area	
	On-the-job Training (600 H to 840 H)	



ADDITIONAL INFORMATION ON SOME SUBJECTS/AREAS

In Portugal, the Education System does not separate pupils according to their origin, beliefs, culture, social condition or gender. **All students share the same classes and spaces, in full equality**, except for the toilets and changing rooms, where the principle of gender separation is preferably maintained, with particular care and analysis on issues related to gender self-determination.

■ Moral and Religious Education Subject

Unless otherwise stated in the Programme/School, all subjects are compulsory, with the exception of **Moral and Religious Education**. As this is a predominantly Catholic subject, **attendance is optional (not compulsory)**, in order to respect the principles of religious freedom and tolerance that prevail in Portugal.

■ Physical Education Subject

The **Physical Education** subject is considered essential for the full and healthy development of children and young people, as it is their inalienable right, regardless of the cultural or religious beliefs of their families. This subject is **compulsory**, while the pupil may be temporarily and exceptionally excused from its attendance for health reasons, by means of a medical certificate. **It is important to emphasise that certain physiological aspects, such as menstruation for girls, do not constitute an impediment to participation in classes.**

Pupils should attend Physical Education lessons wearing **clothing appropriate for physical activity**, normally sportswear or comfortable clothing (e.g. tracksuit, t-shirt, sports trousers or shorts, trainers/tennis shoes or other clothing indicated by the teacher/school). Failure to comply with these rules may lead to a disciplinary notice for lack of material or attendance.

■ Citizenship and Development Subject in Middle and Secondary School

The Citizenship and Development subject covers various topics relevant to the full development of children/young people, depending on their age, including: gender equality, domestic and dating violence, sexuality, participatory citizenship, health, human rights, among others. The subject is **compulsory**, as the topics covered are considered vital to the exercise of full and responsible citizenship.

■ Human Sexuality Area

Aspects related to human sexuality are dealt with transversally in **various subjects** and throughout the school years. Different areas such as affective relationships, the reproductive and sexual system, primary and secondary sexual characteristics, sexual identity, orientation and self-determination, contraception, sexually transmitted infections, among others, are addressed



throughout the school career, depending on the schooling level. These topics are of a **universal and compulsory nature**, being considered vital for the full and integral development of children and young people, with a lifelong impact in their relationship with themselves and with others. They are an essential exercise of freedom, tolerance and responsibility.

■ General Aspects

All pupils must respect and **comply with the rules and regulations in force** in schools, whether these are organisational, academic, social or behavioural. However, there are **exceptions**, duly authorised by the teachers/school, such as the use of cultural and/or religious elements, namely the Hijab, a veil which covers girls' hair, ears and neck (Islamic culture/religion), or turbans of different sizes which cover boys' hair (cultures/religions such as the Sikh). These elements are normally permitted, provided that they do not conflict with fundamental rights (e.g. Human Rights) and legal rights in force in the Portuguese State.

Other clothing items of a purely **aesthetic** nature, such as hats, caps, sunglasses, among others, may not be authorised in the classroom context.

PUPILS ASSESSMENT SYSTEM

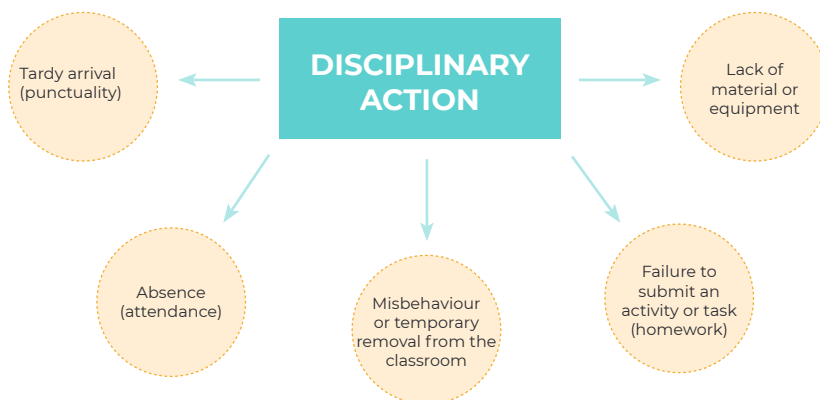
Pre-School	Descriptive assessment of overall student development and learning	
Primary School (Years 1 to 4)	Qualitative Assessment: Insufficient, Sufficient, Good and Very Good	Accompanied by a descriptive assessment of learning progress
Lower Middle School (Years 5 and 6)	Quantitative Assessment, with marks 1, 2 (fail - very insufficient, insufficient), 3, 4 and 5 (pass - sufficient, good and very good)	Assessments made available to families at the end of each semester
Upper Middle School (Years 7 to 9)	Assessment identical to that of Lower Middle School, but with national exams in Portuguese and Mathematics at the end of Upper Middle School	
Secondary School (Years 10 to 12)	Assessment expressed on a scale from 1 to 20, with a pass mark starting at 9.5 (10)	Years 11 and 12 have national final exams in several subjects

In all cycles of education (Primary, Lower and Upper Middle, and Secondary), the marks awarded are the result of a set of previously outlined assessment criteria, observed throughout the semester/year and at specific moments of assessment, based on the results of tests, work, participation, behaviour, attendance, punctuality, among others.

In the middle of each cycle of primary, lower and upper middle education, pupils will have to take national tests in order to assess whether the teaching/learning of certain subjects occurs successfully and homogeneously in Portugal. These tests are called '**Provas de Aferição**' (**Assessment Tests**) and, despite being compulsory, they do not have any weight on the assessment of the student.

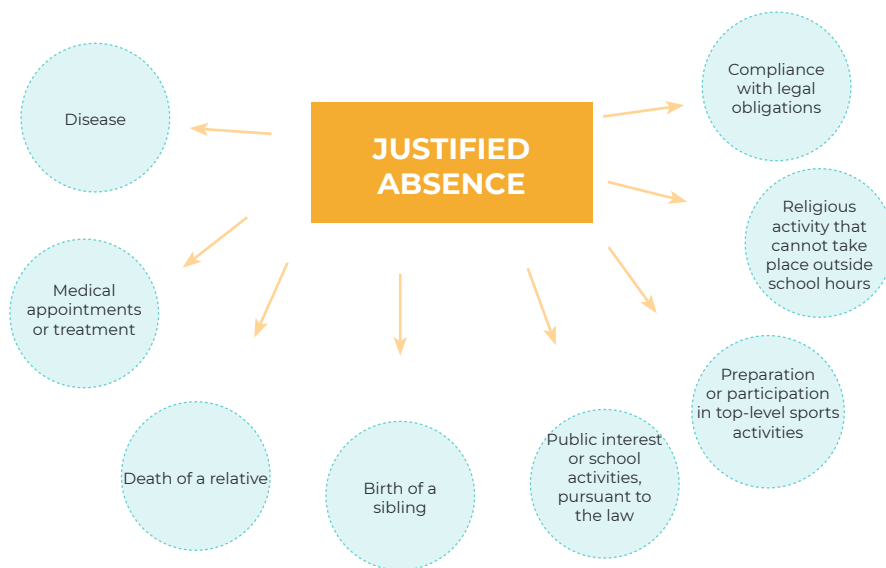
Assessment Tests		
Cycle	Schooling level	Subjects
1	2	Portuguese, Environmental Studies, Mathematics, Physical Education and Artistic Education
2	5	Mathematics, Natural Sciences, Technical Education and Visual Education
3	8	Portuguese, Portuguese as a Second Language, Physical Education, History and Geography

Schooling being compulsory until Year 12 (18 years old), **students must attend all compulsory classes** - be assiduous and punctual. When absences occur, they can be classified as follows:





Absences must be **justified** in order to avoid pupils exceeding the limit of absences and having to comply with remedial or corrective measures or, to the limit, failing the year (retention). As such, absences may be justified for the following **reasons**:



WHO CAN JUSTIFY NOTICES/ABSENCES?

The justifications must be submitted, within a period of **3 working days after the absences**, by the parents or guardians to the **Head Teacher / Class Director**, through:

- the Pupil's Registration Book (primary education) / specific form (secondary education), when the absence is equal to or less than 3 days;
- document of proof (e.g. medical certificate), when the **absence period is longer than 3 days**.

The justifications can be delivered directly to the teacher or through the IT platform. Disciplinary notices due to misbehaviour or temporary removal from the classroom cannot be justified.

BUT WHAT IS A GUARDIAN?

A **Guardian** is the **adult responsible** (in charge) of the child/young person's (under 18 years old) school career and experience. The Guardian is normally one of the parents (**Father/Mother**) or another relative/carer who lives with the child/young person.



The Guardian has a number of responsibilities, including:

- Go to school whenever convened;
- Contribute to their child's educational success;
- Be aware of the pupil's progress and difficulties;
- Justify notices/absences;
- Deal with administrative matters, such as pupil enrollment, etc.

For this, you will receive frequent information from the Class Director/Head Teacher, through the student's booklet or meetings scheduled by them. You can also request an appointment (meeting) in order to present any situation that concerns you.

Students aged 18 or over may be guardians themselves.

WHAT IS A CLASS DIRECTOR / HEAD TEACHER?

Throughout the child/young person's school career, in each education cycle or year, there will be a **teacher responsible for the class**. The denomination given to this teacher varies according to the education cycle, as follows:

Pre-School	Primary School	Lower Middle/Upper Middle and Secondary School
Teacher	Head Teacher	Class Director

In Pre-School and Primary School, the choice is very simple, since the classes have only one teacher, although they may have other classes with other teachers (e.g. physical education, English). From Lower Middle School onwards and until the end of compulsory education (Year 12), the classes have several teachers, and it is necessary to choose one teacher to be responsible for the management and administration of the class - the **Class Director**.

The Class Director will always be the **reference contact** for the guardians.

MEETING WITH THE GUARDIAN

The meeting and/or information to the School's guardians can be provided through:

- Meeting with the Class Director
(in a weekly schedule set at the beginning of the school year);
- E-mail - available at the beginning of the school year;
- Pupil's registration book;
- Computer Platform.



PUPIL'S REGISTRATION BOOK

The **pupil's registration book** is a document **free of charge** distributed to all pupils in compulsory education, from pre-school to secondary school. The main function of this book is to allow **written communication between teachers and the guardian (and vice-versa)**, and it may contain information on various matters (e.g. field trips, behaviour, assessment dates, justifications, etc.) and record other elements of equal importance (e.g. timetable, assessment dates, contact details of the guardian and the school, etc.).

The book must accompany the pupil **daily** and **compulsorily**, throughout the school activities.

PUPIL'S CARD

The **pupil's card is an identification document** distributed free of charge (1st copy) to all pupils of the **Lower Middle, Upper Middle and Secondary school** in the beginning of the school year and pupils are not allowed into the school without it, for security reasons. This card is **personal and non-transferable**, and has an electronic/software component which allows the identification of the pupil and access to the following information:

- Grouping/School;
- Name, year and class of the student;
- Timetable;
- Authorisation to leave school (granted by the student's guardian, to the school);
- Available balance.

The student's card can be **credited/charged with money** at places determined by each school and/or a computer platform. The student can then access the different services available in the school establishment (e.g. Bar/Buffer, Stationery Office) and purchase the services/materials needed (e.g. meal bookings, pencils, pens, notebooks, etc.), with the respective value being debited from the card.

The use of the card's balance instead of cash is intended to make the school an even **safer** place.



SCHOOL MEALS

Nutrition is crucial for the cognitive development and school performance of children and young people. Furthermore, it is one of the fundamental rights of the Human Being.

School meals are a **universal school social measure**, aimed at all pupils and enshrined in the Base Law of the Education System, to ensure a balanced diet appropriate to their needs.

All children and young people are provided with a daily meal (lunch) consisting of:

- Soup (vegetables)
- Main dish with garnish
- Bread
- Dessert (fruit)
- Drink (water)

At lunchtime, the student will be offered three types of menu - **General** (Mediterranean cuisine), **Vegetarian** and **Halal**. For medical reasons only, specific diets may be available. The price of the meals varies according to the child's/youngster's family allowance group (A, B or C), in accordance with the following table:

Meal prices for the 2021/2022 School Year				
Level of Education	Meal Type	Meal Price		
		Group A	Group B	Group C
Pre-school and Primary School	Breakfast	Free	0.18€	0.37€
	Lunch		0.73€	1.46€
	Afternoon Snack		0.18€	0.37€
Lower Middle and Upper Middle School	Lunch		0.73€	1.46€
Secondary School	Lunch		0.73€	1.46€

- Group A - Highly disadvantaged pupils
- Group B - Disadvantaged pupils
- Group C - Not-disadvantaged pupils

Calculation of income set annually by Order of the Ministry of Education

SCHOOL SOCIAL SUPPORT (ASE)

Comprises the strategies and measures implemented by the **City Council of Odivelas (CMO)**, to support families and combat social inequalities in the Municipality. The following are of particular importance:



- Offer of **School Tokens** up to year 6 of schooling;
- Offer of **Educational Kit** with school material, in Primary School;
- Supply of **3 daily school meals** (breakfast, lunch and afternoon snack);
- The value corresponding to the meals is related to the child/young person's Family Allowance Group (A, B or C), in accordance with the table on the previous page.

For any clarification please contact:

Education Division of CMO

Rua Laura Alves, n.º 5, Piso 2, Urbanização da Ribeirada, 2675-608 Odivelas

+351 219 320 350

or go to www.cm-odivelas.pt.

WHAT OPTIONS ARE THERE FOR MONITORING CHILDREN/YOUNG PEOPLE BEYOND SCHOOL HOURS?

There are several options in the municipality managed by Private Charitable Institutions (IPSS) or Local associations, with which the Municipality of Odivelas has signed a protocol for this purpose.

We highlight the following:

- **Family Support and Occupational Activities (AAAF)** - Occupational activities and monitoring of children attending pre-school establishments of the public network, before and after the daily period of education activities and during periods of interruption of those activities, in order to ensure a schedule appropriate to the needs of families.
- **Curriculum Enrichment Activities (AEC)** - Article 7 of Ordinance no. 644-A/2015 of 24 August defines Curriculum Enrichment Activities as "....AEC in primary school, activities of an optional nature and eminently recreational, formative and cultural nature that focus, in particular, on the sports, artistic, scientific and technological fields, school liaison with the environment, solidarity and volunteering and the European dimension in education."

Article 8(1) of Ordinance no. 644-A/2015 of 24 August states "AEC offer is compulsory and attendance is free of charge, while enrollment is optional."

- **Family Support Component (CAF)** - Article 5 of Ordinance no. 644-A/2015 of 24 August defines the Family Support Component AMEND TO - as "CAF is considered the set of activities aimed at ensuring the monitoring of pupils in primary school before and after



the curriculum and AEC components, as well as during school breaks."

WHAT PUBLIC EDUCATION INSTITUTIONS ARE THERE IN THE MUNICIPALITY?

The enrollment (new enrollment) or the renewal of enrollment (continuity in the respective education cycle) of the child or young person is carried out at the head school of the Schools Grouping or Non Grouped School in the area of residence, using the appropriate form, or through the Enrollment Portal (<https://portaldasmatriculas.edu.gov.pt/pmat/#/portal/home>).

Education institutions may be organised into School Groupings (AE) or constitute themselves as Non-Grouped Schools (ENA).

Odivelas has the following:

		Address	AAAF	CAF
AE SUDOESTE DE ODIVELAS	Head-School: Ensino Básico (E.B.) 2.º e 3.º ciclos António Gedeão Escola Básica António Gedeão, Odivelas	Rua Fernando Namora 2675-487 Odivelas +351 219 341 031 ce.eb23gedeao2@gmail.com eb23antoniogedeao@mail.telepac.pt		
	Escola Básica Pré-escolar e 1.º Ciclo Quinta das Dálías	Rua Quinta das Dálías - Quinta das Dálías, 1685-871 Famões +351 219 340 397	•	•
	Escola Básica Pré-escolar e 1.º Ciclo Veiga Ferreira	Rua Luís Manuel Ribeiro, Casal da Silveira 1685-208 Famões +351 219 806 531 Pre-School: +351 219 810 949 ce.eb23agedeao2@gmail.com	•	•
	Escola Básica Pré-escolar e 1.º Ciclo Casais do Trígache	Rua Afonso Lopes Vieira, nº 41 Bairro Queimadas - Fontainhas 1685-695 Famões +351 219 344 208 ce.eb23agedeao2@gmail.com	•	•
	Escola Básica Pré-escolar e 1.º Ciclo Sophia de Melo Breyner Andresen	Rua Eça de Queiroz, Quinta das Pretas 1685-897 Famões +351 219 340 399 ce.eb23agedeao2@gmail.com	•	•



		Address	AAAF	CAF
AE D. DINIS	Head-School: Escola Básica 2.º e 3.º Ciclo D. Dinis (Odivelas)	Rua Lobito, Pombais 2675-511 Odivelas +351 219 345 300 direcao@ddinis.pt		
	Escola Básica 1.º Ciclo Rainha Santa (Odivelas)	Rua Antero Quental, Patameiras 2675-481 Odivelas +351 219 327 954 eb1rainhasanta@gmail.com	•	•
	Escola Básica Pré-escolar e 1.º Ciclo Maria Lamas (Odivelas)	Rua Espírito Santo, nº 14 2675-346 Odivelas +351 219 328 761 Pre-School: +351 219 314 202 eb1marialamas2@gmail.com jimarialamas@gmail.com	•	•
	Escola Básica Pré-escolar e 1.º Ciclo do Mosteiro (Odivelas)	Avenida Reinaldo dos Santos, nº 10 Urbanização Colinas do Cruzeiro 2675-674 Odivelas	•	•

		Address	AAAF	CAF
AE MOINHOS DA ARROJA	Head-School: Escola Básica 2.º e 3.º Ciclo Moinhos da Arroja(Odivelas)	Rua Fernando Lopes Graça, nº 6 2675-549 Odivelas +351 219 348 850 ramada@mail.telepac.pt secretaria@aemoinhosarroja.pt		
	Escola Básica Pré-escolar e 1.º Ciclo Manuel Coco	Praceta Irene Lisboa, nº 7 - Arroja 2675-554 Odivelas +351 219 346 010 Pre-School:219346012 manuelcoco@aemoinhosarroja.pt	•	•
	Escola Básica Pré-escolar e 1.º Ciclo Porto Pinheiro	Rua Fernando Lopes Graça, nº 6 2675-549 Odivelas +351 219 346 430 portopinheiro@aemoinhosarroja.pt	•	•
	Jardim de Infância Dr. João dos Santos	Rua Dr. João Santos, nº 2 - Arroja 2675-556 Odivelas +351 219 330 283 joaosantos@aemoinhosarroja.pt	•	•

		Address	AAAF	CAF
AE VASCO SANTANA	Head-School: Escola Básica 2.º e 3.º Ciclo Vasco Santana (Ramada)	Rua 25 de Agosto - Bons Dias 2620-297 Ramada +351 219 347 670 agevascosantana@gmail.com		
	Escola Básica 1.º Ciclo Amoreira (Ramada)	Rua Cristiano Augusto Bramão - Serra da Amoreira 2620-435 Ramada +351 219 331 253 ebamoreira@vasco-santana.edu.pt ebamoreira@gmail.com		•
	Escola Básica Pré-escolar e 1.º Ciclo Casal dos Apréstimos (Ramada)	Avenida 25 de Abril, nº 23 e 23 A 2620-530 Ramada +351 219 346 600 ebaprestimos@vasco-santana.edu.pt	•	•
	Escola Básica Pré-escolar e 1.º Ciclo João Villaret (Ramada)	Rua João Villaret - Bons Dias 2620-280 Ramada +351 219 337 607 Pre-School: +351 219317175 ebjoavillaret@vasco-santana.edu.pt	•	•
	Escola Básica Pré-escolar e 1.º Ciclo Eça de Queirós (Ramada)	Rua Eça de Queirós - Bairro de São Jorge 2620-217 Ramada +351 219 817 510 ebecaqueiros@vasco-santana.edu.pt	•	•
	Jardim de Infância da Azenha (Ramada)	Rua Estêvão Amarante, nº 42 2620-274 Ramada +351 219 342 451 jiazinha@vasco-santana.edu.pt	•	•
		Address	AAAF	CAF
AE ADELAIDE CABETTE	Head-School: Escola Secundária e 3.º Ciclo de Odivelas (Odivelas)	Avenida Professor Doutor Augusto Abreu Lopes 2675-300 Odivelas +351 219 348 280 geral@es-odivelas.pt		
	Escola Básica 2.º e 3.º Ciclo Avelar Brotero (Odivelas)	Rua Guilherme Gomes Fernandes 2675-366 Odivelas +351 219 348 860 eb23.ab@agr-odivelas.pt		•
	Escola Básica 1.º Ciclo António Maria Bravo (Odivelas)	Rua Gil Eanes 2675-360 Odivelas +351 219 331 238 eb1.amb@agr-odivelas.pt		•
	Escola Básica 1.º Ciclo Bernardim Ribeiro (Odivelas)	Rua Bernardim Ribeiro - Bairro Codivel 2675-229 Odivelas +351 219 386 263 eb.n5@agr-odivelas.pt		•
	Escola Básica 1.º Ciclo D. Dinis nº 1 (Odivelas)	Rua Professor Doutor Francisco Gentil 2675-357 Odivelas +351 219 314 583 eb1.ddinis@agr-odivelas.pt	•	•
	Escola Básica 1.º Ciclo Maria Máxima Vaz (Odivelas)	Rua Domingos Sequeira - Bairro EDEC 2675-357 Odivelas +351 219 329 393 eb1.mmv@agr-odivelas.pt	•	
	Jardim de Infância Álvaro de Campos (Odivelas)	Rua Álvaro de Campos - Bairro da Codivel 2675-225 Odivelas ji.ac@agr-odivelas.pt	•	
	Jardim de Infância Roque Gameiro (Odivelas)	Rua Guilherme Gomes Fernandes 2675-366 Odivelas +351 219 348 860 eb23.ab@agr-odivelas.pt	•	



		Address	AAAF	CAF
AE BRAAMCAMP FREIRE	Head-School: Escola Secundária Braamcamp Freire (Pontinha)	Rua Doutor Gama Barros 1679-002 Pontinha +351 214 788 440 geral@aebf.pt		
	Escola Básica 2.º e 3.º Ciclo da Pontinha (Pontinha)	Azinhaga dos Besouros 2650-367 Amadora +351 214 787 260 ebpontinha@aebf.pt		
	Escola Básica 1.º Ciclo Dr. Mário Madeira (Pontinha)	Avenida Fundação Calouste Gulbenkian 1675-101 Pontinha +351 214 785 029 ebdmariomadeira@aebf.pt		•
	Escola Básica 1.º Ciclo Mello Falcão (Pontinha)	Praça São João - Bairro Falcão 1675-165 Pontinha +351 214 793 372 ebmellofalcão@aebf.pt		•
	Escola Básica Pré-escolar e 1.º Ciclo do Casal da Serra (Paiã- Pontinha)	Rua da Escola, nº2 - Porto Paiã 1675-325 Pontinha +351 214 784 281 Pre-School: +351 214 784 060 ebcasaldaserra@aebf.pt	•	•
	Escola Básica Pré-escolar e 1.º Ciclo Quinta da Condessa (Pontinha)	Rua Palmira Bastos, Bairro da Condessa - Paiã, 1675-627 Pontinha +351 214 785 245 Pre-School: +351 214 780 883 ebquintadacondessa@aebf.pt	•	•
	Escola Básica Pré-escolar e 1.º Ciclo Serra da Luz (Pontinha)	Rua Dom Afonso Henriques, Serra da Luz - Urmeira 1675-203 Pontinha +351 214 785 303 ebserradaluz@aebf.pt		•
	Escola Básica Pré-escolar e 1.º Ciclo Vale Grande (Pontinha)	Rua Cidade de Alcobaça, Vale Grande 1675-061 Pontinha +351 219 814 735 ebvalegrande@aebf.pt	•	•
	Escola Básica Pré-escolar e 1.º Ciclo Quinta da Paiã (Pontinha)	Estrada da Paiã - Urmeira 1675-077 Pontinha +351 214 790 420 Pre-School: +351 214 780 011 ebquintadapaia@aebf.pt	•	•
	Jardim de Infância Gil Eanes (Pontinha)	Rua Gil Eanes 1675-120 Pontinha +351 214 795 469 jigileanes@aebf.pt	•	

		Address	AAAF	CAF
AE DE CANEÇAS	Head-School: Escola Secundária de Caneças	Rua Escola Secundária 1685-105 Caneças +351 219 809 630 geral@aecanecas.com sa@aecanecas.com		
	Escola Básica 2.º e 3.º Ciclo dos Castanheiros	Rua da Olivença, Quinta dos Castanheiros, 1685-590 Caneças +351 219 818 150 eb.castanheiros@aecanecas.com	•	•
	Jardim de Infância Francisco Vieira Caldas	Largo Vieira Caldas, 1685-605 Caneças Pre-School: Praça José Saramago, Lote C, Loja B, Quinta da São Carlos 1685-605 Caneças +351 219 804 531 eb.fvcaldas@aecanecas.com	•	•
	Escola Básica Pré-escolar e 1.º Ciclo Artur Alves Cardoso	Rua Guiné, Bairro dos CTT, Campos de Caneças 1685-475 Caneças +351 219 803 853 eb.aacardoso@aecanecas.com	•	•
	Escola Básica Pré-escolar e 1.º Ciclo Cesário Verde	Rua Alvarense, Casal Novo, 1685-394 Caneças +351 219 806 254 eb.cverde@aecanecas.com	•	•
	Escola Básica Professora Maria Costa	Rua da Escola Primária - Ponte da Bica, 2620-269 Ramada +351 219 334 959 eb.profmcosta@aecanecas.com	•	•
		Address	AAAF	CAF
AE PEDRO ALEXANDRINO	Head-School: 3.º Ciclo e Escola Secundária Pedro Alexandrino	Rua Aquilino Ribeiro 2620-182 Póvoa de Santo Adrião +351 219 380 310 d.executiva@espa.edu.pt		
	Escola Básica 2.º e 3.º Ciclo Carlos Paredes	Rua Marechal Craveiro Lopes, Bairro São José, 2620-136 Póvoa de Santo Adrião +351 219 375 820 d.executiva@espa.edu.pt		•
	Escola Básica Pré-escolar e 1.º Ciclo Quinta de São José (Póvoa de Santo Adrião)	Rua Padre Manuel da Nóbrega 2620-107 Póvoa de Santo Adrião +351 219 386 337 Pre-School: +351 219 386 337 eb1quintadesaojose@gmail.com	•	•
	Escola Básica Pré-escolar e 1.º Ciclo Barbosa Du Bocage (Póvoa de Santo Adrião)	Rua Barbosa Du Bocage, nº 7 2620-133 Póvoa de Santo Adrião +351 219 380 710 eb1jibarbosadubocage@gmail.com	•	•
	Escola Básica Pré-escolar e 1.º Ciclo Olival Basto (Odivelas)	Rua Guiné, 2620-044 Olival Basto +351 219 378 168 Pre-School: +351 219 378 168 ebolivalbasto@espa.edu.pt	•	•
	Jardim de Infância Alzira Beatriz Pacheco	Rua Dom Afonso Henriques, Póvoa de Santo Adrião 2620-079 Póvoa de Santo Adrião	•	
		Address		
ENA	Escolas Secundária da Ramada (Ramada)	Largo da Escola Secundária 2620-439 Ramada +351 219 340 245 cexecutivo@esramada.pt		
	Escola Profissional Agrícola D. Dinis – Paiã (Pontinha)	Rua Pedro Álvares Cabral, Paiã 1679-003 Pontinha +351 214 788 840 geral.secretaria@epadd-paia.pt paia.escola@gmail.com		



WHAT OPTIONS ARE THERE IN THE MUNICIPALITY'S PUBLIC SCHOOLS FOR THE MONITORING AND INCLUSION OF CHILDREN/YOUNG PEOPLE WITH DISABILITIES?

■ LEARNING SUPPORT CENTRES (CAA)

The Learning Support Centres (CAA) are a resource for schools, seeking, through coordination - which varies according to the specificities of each case - between Special Education and Regular Education, to find the most favourable environment for learning and for the integration of knowledge. Following this logic, this option aims to increase the level of autonomy and participation in school of these students, together with their teachers and their peers.

With a view to the inclusion of **pupils with disabilities**, the CAA bring together human and material resources, knowledge and specific skills.

Currently, there are CAAs in the following School Groupings (AE):

- AE Adelaide Cabette (Odivelas);
- AE Braamcamp Freire (Pontinha);
- AE Pedro Alexandrino (Póvoa de Santo Adrião);
- AE Sudoeste de Odivelas (Odivelas);
- AE Vasco Santana (Ramada).

■ MULTIDISCIPLINARY TEAMS TO SUPPORT INCLUSIVE EDUCATION (EMAEI)

The Multidisciplinary Team to Support Inclusive Education (EMAEI) is one of the specific organisational resources to support learning and inclusion, with a view to a broad-based, integrated and participatory understanding of all those involved in the educational process.

ARE YOU ENTITLED TO FOREIGN EQUIVALENCES / RECOGNITION OF QUALIFICATIONS?

- When registering the child/young person it is necessary to apply equivalence, using the appropriate form, at the education establishment in the pupil's area of residence or professional activity.
- Equivalence is free of charge;
- Once all the necessary documents have been submitted, the process takes an average of 30 days;
- In the case of foreign adults, the application for equivalence can be made at any time of the year.

WHAT DOCUMENTS ARE NECESSARY TO REQUEST FOREIGN EQUIVALENCES / RECOGNITION OF QUALIFICATIONS?

- Certificates of the schooling qualifications successfully completed:



CERTIFIED by:

Portuguese consulates or embassies based in the country to which the document relates.

OR

Consulates or embassies of foreign countries in Portugal or with The Hague Apostille, for countries that signed on to the Hague Convention.

AND TRANSLATED INTO PORTUGUESE:

An official translation is required, indicating the year(s) of schooling, Cycle of schooling, Cycle of Studies or Course successfully completed and the respective final marks or final average obtained.

To supplement the information regarding the qualifications certificates, the following documents may also be required:

- Declaration issued and authenticated by the competent services, with information about the grading scale used and the minimum pass mark;
- Data about the foreign education system to which the qualification certificate refers (number of years of schooling, conditions of access, school certification criteria);
- Specific (application) form provided by the educational establishment, duly filled in;
- Legible photocopy of updated identification document (e.g. identity card, citizen card, passport, residence permit).

ADAPTED TRANSPORT

The City Council of Odivelas provides **adapted transport for people with disabilities** who are attending an education institution or a support institution for people with disabilities.

For more information, please contact: Rua Laura Alves, n.º 5, Piso 2, Urbanização da Ribeirada, 2675-60 Odivelas / +351 219 320 350.

SCHOOL OR WEEKLY SCHEDULE

The **school/Weekly schedule** is a fundamental instrument for pupils' organisation and success. From Lower Middle School onwards, the schedule will allow pupils to know, on a daily basis, the



subjects, hours and classrooms, so that they can organise their material and arrive on time to every class, promoting their autonomy and responsibility.

The school timetable can also work as a powerful ally in the **weekly/daily organisation of the time dedicated to study** and other school activities, as well as of daily tasks of leisure, domestic, family and sports nature, among others. All this information can be recorded in the school/weekly schedule so that pupils have a full and organised perception of their week.

Besides the school/weekly schedule, it is important for pupils to record, throughout the school year, the dates of assessments of the various subjects in an **Assessment Calendar**, so that they can organise their study well in advance.

At the end of this guide you will find an example of a detachable schedule that you may use.

STUDENT STATUTE (LAW NO. 51/2012, OF 5 SEPTEMBER)

...RIGHTS

- To be properly and respectfully treated by all;
- Not be discriminated against because of their ethnicity, gender, health, sexual orientation, age, gender identity, economic, cultural or social status, political, ideological, philosophical or religious convictions;
- To enjoy a quality education;
- To see merit, dedication, attendance and effort recognised and valued;
- To see their commitment to meritorious actions, such as volunteering work, recognised;
- To enjoy a balanced and appropriate schedule and planning of activities;
- To benefit from support and services that allow them to overcome specific needs or difficulties;
- To benefit from prizes, support or complementary means which acknowledge merit;
- To attend School safely;
- To be assisted in case of sudden illness or accident during school activities;
- To have the confidentiality of personal or family information guaranteed;

- To participate or elect their representatives in school management, under the terms of the Law;
- To make comments and suggestions regarding the School's operation;
- To organise and participate in initiatives that promote the occupation of free time;
- To be informed of the School's internal regulations and rules of operation;
- To benefit from appropriate measures for the recovery of learning.

...DUTIES

- To study and be dedicated in an age-appropriate way;
- To be assiduous, punctual and committed;
- To follow the instructions and respect the authority of teachers and non-teaching staff;
- To treat everyone appropriately and respectfully;
- Not to discriminate against any member of the educational community because of their ethnicity, gender, health, sexual orientation, age, gender identity, economic, cultural or social condition, political, ideological, philosophical or religious convictions;
- To contribute to the harmony of coexistence among all;
- To participate in the educational and training activities developed at the School;
- To respect everyone's physical, material and psychological integrity;
- To provide help and assistance to the other members of the school community;
- To ensure the preservation, conservation and cleanliness of school facilities and materials;
- To respect the property of all members of the school community;
- To remain at school during their schedule, unless otherwise authorised;
- To know and comply with the school's rules of operation;
- Not to own or consume addictive substances (drugs, tobacco, alcoholic beverages);
- Not to carry with them any materials, objects or technological equipment which are dangerous or disturb the normal functioning of school activities;
- Not to use any technological equipment (e.g. mobile phones) in the places where classes or



other formative activities or meetings are taking place, unless authorised by the teachers;

- Not to capture sounds or images of school or non-school activities without the authorisation of the teachers;
- Not to disseminate, in school or out of school, through the internet or by other means, images and sounds captured during school or non-school activities, without the authorisation of the school management;
- To present themselves with appropriate clothing, according to their age and the school activities to be developed;
- To repair or compensate for any damages caused by them to any member of the educational community.





USEFUL INFORMATION

City Council of Odivelas

Rua Guilherme Gomes Fernandes, Quinta da Memória | 2675-372 Odivelas

T: +351 219 344 393

@: geral@cm-Odivelas.pt

Public Safety Police – 71st Station of Odivelas

Rua António Aleixo, 1 – r/c | 2675-130 Odivelas

T: +351 219 380 200

Migrants Support Line (ACM)

Tel. 808 257 257

Local Centre for the Support to Migrants Integration (CLAIM)

Strada Outlet – Citizen's Bureau

Estrada da Paiã – Casal da Troca | 2675-625 Odivelas

Business days: 8:30 a.m. - 7:30 p.m.

Saturdays: 9:30 a.m- 3 p.m.

T: +351 219 526136

Espaço Nova Vida Charitable Association – ENV (CLAIM)

Rua Soldado Joaquim Manuel Lagarto, Bairro Girassol, Ramada | 2620-243 Odivelas

Rua Dom Nuno Álvares Pereira, Bairro Mário Madeira | 1675-148 Pontinha

Inclusion Office – City Council of Odivelas

Rua Laura Alves, 5 - Urbanização da Ribeirada | 2675-608 Odivelas

T: +351 219 320350

@: balcão.inclusao@cm-odivelas.pt

GIP – Vocational Inclusion Office

Rua Alfredo Roque Gameiro, 18 B | 2675-277 Odivelas

T: +351 219 320430/431

@: gip.imigrante@cm-odivelas.pt

**Parish Council of Odivelas**

Alameda do Poder Local, 4 | 2675-427 Odivelas

T: +351 219 319 000

@: geral@jf-odivelas.pt

Joint Parishes of Pontinha and Famões

Avenida 25 de Abril, 22 A | 1675-183 Pontinha

T: +351 214 787 280

@: geral@jf-pontinhafamoes.pt

Delegation of Famões

Praceta 25 de Agosto, 8 B | 1685-923 Famões

T: +351 214 787 280

Joint Parishes of Ramada and Caneças

Rua Vasco Santana, 1 C | 2620-364 Ramada

T: +351 219 348 270

@: geral@uf-ramadaecanecas.pt

Delegation of Caneças

Rua da República, 131 | 1685-595 Caneças

T: +351 219 800 880

Joint Parishes of Póvoa de Santo Adrião and Olival Basto

Rua Alves Redol, 17 | 2620-127 Póvoa de Santo Adrião

T: +351 219 379 990

@: geral@uf-povoaolival.pt

Delegation of Olival Basto

Rua Diu, Lote 5 | 2620-066 Olival Basto

T: +351 219 389 566

Social Security

Citizen's Bureau of Odivelas | Strada Shopping & Fashion Outlet, Loja 2048

Estrada da Paiã – Casal da Troca | 2675-625 Odivelas

Opening Hours:

9 a.m./4 p.m. – Monday to Friday

IEFP - Employment and Vocational Training Institute

Rua Goa, 9 | 2670-405 Lisboa

T: +351 219 828 100

Hospital Beatriz Ângelo (HBA)

Avenida Carlos Teixeira, 3 | 2674-514 Loures

T: +351 219 847 200 | Fax: +351 219 847 209

@: geral@hbeatrizangelo.pt | <http://www.hbeatrizangelo.pt>

Health Care Units of the Parish of Odivelas

Unidade de Saúde Familiar (USF) Cruzeiro

Rua Prof. Dr. Augusto Abreu Lopes, 31 | 2675-297 Odivelas

T: +351 210 529 500

@: usf.cruzeiro@arslvt.min-saude.pt

USF Mosteiro

Rua Prof. Dr. Augusto Abreu Lopes, 31 | 2675-297 Odivelas

T: +351 210 529 480

@: usf.mosteiro@arslvt.min-saude.pt

Personalised Health Care Unit (UCSP) Odivelas

Rua Prof. Dr. Augusto Abreu Lopes, 36 | 2675-297 Odivelas

T: +351 219 347 470

@: ucsp.odivelas@arslvt.min-saude.pt

Health Care Units of the Joint Parishes of Ramada and Caneças**USF Colina de Odivelas**

Avenida 25 de Agosto | 2620-488 Ramada

T: +351 219 346 186

@: usf.colina@arslvt.min-saude.pt

USF Ramada

Avenida 25 de Agosto | 2620-488 Ramada

T: +351 219 346 183

@: usf.ramada@arslvt.min-saude.pt

UCSP Caneças

Rua Júlia Escrivanz | 1675-580 Caneças

T: +351 219 809 570

@: ucsp.canecas@arslvt.min-saude.pt

**Health Care Units of the Joint Parishes of Póvoa de Santo Adrião and Olival Basto**

USF Genesis - Rua Henrique dos Santos | 2675-161 Póvoa de Santo Adrião

T: +351 219 380 230

@ usf.genesis@arslvt.min-saude.pt

UCSP Póvoa de Santo Adrião

Rua Henrique dos Santos | 2675-161 Póvoa de Santo Adrião

T: +351 219 380 221

@: ucsp.pstadriao@arslvt.min-saude.pt

Community Care Unit - Saúde a Seu Lado

Rua Henrique dos Santos | 2675-161 Póvoa de Santo Adrião

T: +351 219 380 221

@: ucc.odivelas@arslvt.min-saude.pt

Health Care Units of the Joint Parishes of Pontinha and Famões

Community Care Unit Nostra Pontinha

Av. São Pedro, Lote R5 - c/v | 1675-171 Pontinha

T: +351 210 126 665

@: ucc.npontinha@arslvt.min-saude.pt

UCSP Caneças e Famões - Famões Healthcare Centre

Rua da Associação, Lote E - 1º Casal do Bispo | 1685-742 Famões

T: +351 219 809 628

@: g3114501@arslvt.min-saude.pt

UCSP Pontinha and Urmeira

Bairro de Santa Maria, 35 | 1675-003 Urmeira

T: +351 214 787 810

@: ucsp.urmeira@arslvt.min-saude.pt

UCSP Novo Mirante

Estrada da Correia, 53 | 1500-210 Lisbon

T: +351 210 735 800

@: usf.nvmirante@arslvt.min-saude.pt

Odivelas Fire Brigade

Rua Bombeiros Voluntários, 43 | 2675-305 Odivelas

T: +351 219 348 290

@: bombeiros.odivelas@bvodivelas.com

Caneças Fire Brigade

Rua Ribeiras, 4 | 1685-486 Caneças

T: +351 21 981 7400

@: geral@ahbvc.pt

Pontinha Fire Brigade

Av. Prof. Francisco Sá Carneiro | 1675-076 Pontinha

T: +351 214 787 210

@: bvpontinha@gmail.com

Linha Nacional de Emergência Social (Social Emergency)

T: 114

Emergency Service - INEM

T: 112

Associação Portuguesa de Apoio à Vítima (Victim Support)

T: 160 006

Sexualidade em Linha (Sexuality)

T: 800 222 003

SOS Voz Amiga (Friendly Voice)

T: +351 213 544 545 / +351 963 524 600

SOS Bullying

T: 808 962 006

@: bulialuno@anprofessores.pt

Poison Control Centre (CIAV)

T: 800 250 250



Saúde 24 (Health)

T: 808 24 24 24

SOS Criança (Children)

T: 116 111



[illegible]

